

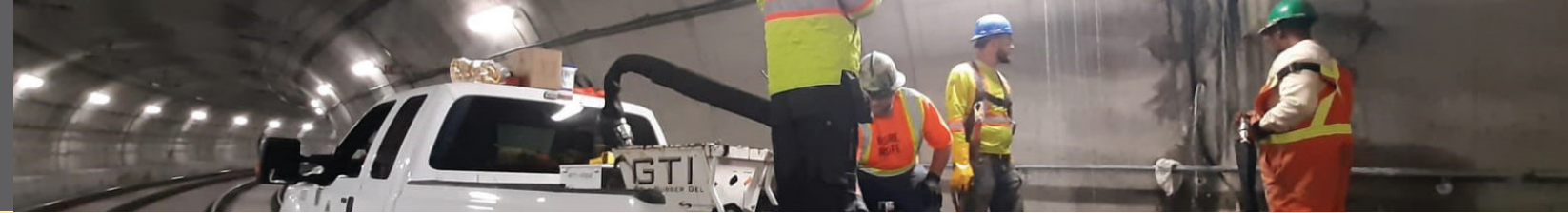
GEL-TECH Systems

High Performance Waterproofing

GTI-1000 | GTS 350 | GTS 500

GEL-TECH SYSTEMS is a composite waterproofing system that incorporates a cold fluid applied GTS Polymer Rubber Gel with a high performance GTM Protection Sheet. The combination of a non-curing, self-healing, Polymer RubberGel, with a durable puncture resistant protection sheet, makes GEL-TECH the ultimate waterproofing solution for above grade, below grade and blind side applications in mining and tunneling.





GTS ADVANTAGE

- Flexible, non-curing and continuously self-healing
- Exceptional adhesion and bonding characteristics
- Waterproofing integrity is maintained. No loss of adhesion or separation
- Remains as a flexible gel. Durable to vibration and continuous movement
- Seamless application for all types of structures
- Strong, durable membrane that is tear and puncture resistant
- Resistant to chemicals, freeze/thaw cycling, and dry/wet cycling
- Can be applied virtually any weather and temperature, including freezing conditions

- Minimal substrate preparation, no primer necessary
- May be applied to "green" or damp concrete
- Highly efficient installation; up to 12,000 sf. per day
- Installed costs are up to 20% less than hot rubber

SAFETY

- Minimal odor, non-toxic, no Volatile Organic Compounds (VOC's)
- Eco-friendly - High solids content, solvent free. Made with recycled tire rubber
- Classified as a DOT non-hazardous material for easy transport and storage

GTS POLYMER RUBBER GEL 350 & 500

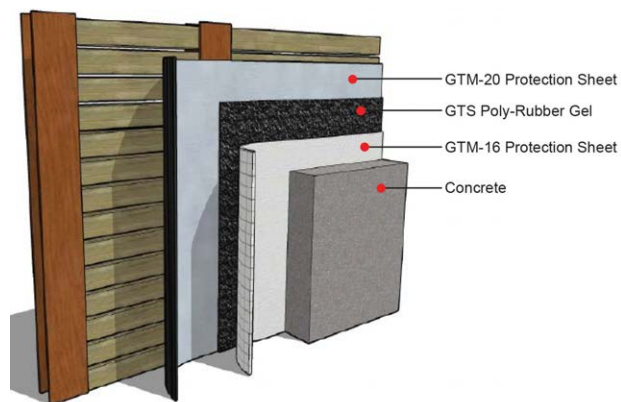
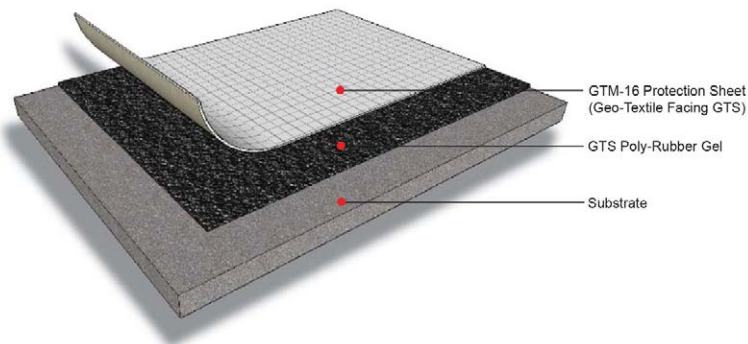
FLUID-APPLIED WATERPROOFING MEMBRANE

GTS Polymer Rubber Gel is a single component, spray-applied, highly elastomeric modified polymer rubber gel infused with special adhesives. GTS used in GEL-TECH

SYSTEMS Composite GTS-350 and GTS-500 waterproofing systems for above and below grade construction. Due to its superior flexibility, adhesiveness and self-healing characteristics, GTS is ideal for effective, permanent waterproofing in harsh environments such as mining and tunneling.

GTS-350

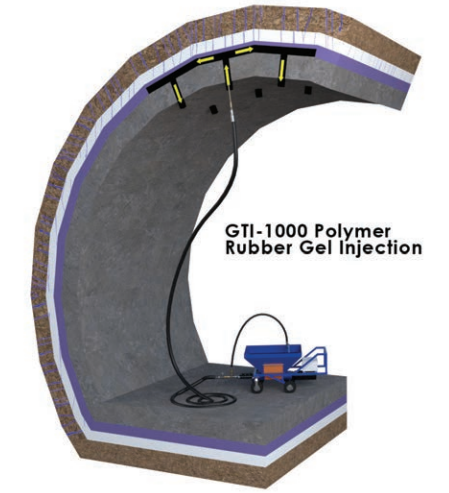
GTS-350 is a positive side composite waterproofing system for new construction and restoration projects. The fast and effective spray-applied method, combined with a durable puncture resistant protection sheet, results in a complete waterproofing system that is immediately active.



GTS-500

GTS-500 is a blind-side composite waterproofing system which provides three layers of protection for new construction projects. GTS Polymer Rubber Gel is sandwiched between HDPE protection sheets creating a dynamically responsive assembly.

PHYSICAL PROPERTIES • GTS Polymer Rubber Gel	
Solids Content	99% (ASTM D 1353)
Resistance to Decay	0% moisture permeation & weight change (ASTM E 154 - 88)
Hardness	80 (ASTM C836-89)
Puncture Resistance	102 lbf (ASTM E - 154)
Flash Point	>228°C (ASTM D56)
Tensile Strength	190+/- 0.11 lbf (ASTM D -412-98)
Elongation %	394% (ASTM C1135)
Hydrostatic Pressure Resistance	169.3 lbf/in 2 (ASTM D- 751)
Adhesion to Concrete	Rating of 1 - Excellent (ASTM D - 412- 98)
Crack Bridging Flexibility	No cracks (ASTM C -836-89)
Moisture Premeability	.0185 perms (ASTM E - 96-80)
Peel Resistance	1.01 lbf/in (ASTM D1876-08)



GTI-1000 INJECTABLE POLYMER RUBBER GEL

REPAIR. RESTORE. STOP LEAKS.

GTI-1000 is a single component, highly elastomeric, injectable polymer rubber, infused with special adhesives. It can be used in any horizontal injection application to repair water leaks in structures, including high volume, active water.

Due to its superior flexibility, adhesiveness and selfsealing characteristics, GTI-1000 is ideal for repairing and

restoring damaged waterproofing membranes in harsh environments such as mining and tunneling.

The system does not require excavation, therefore, this method will greatly reduce project time and cost. Holes are drilled into the damaged waterproof layer and GTI-1000 is injected to restore the waterproofing integrity.

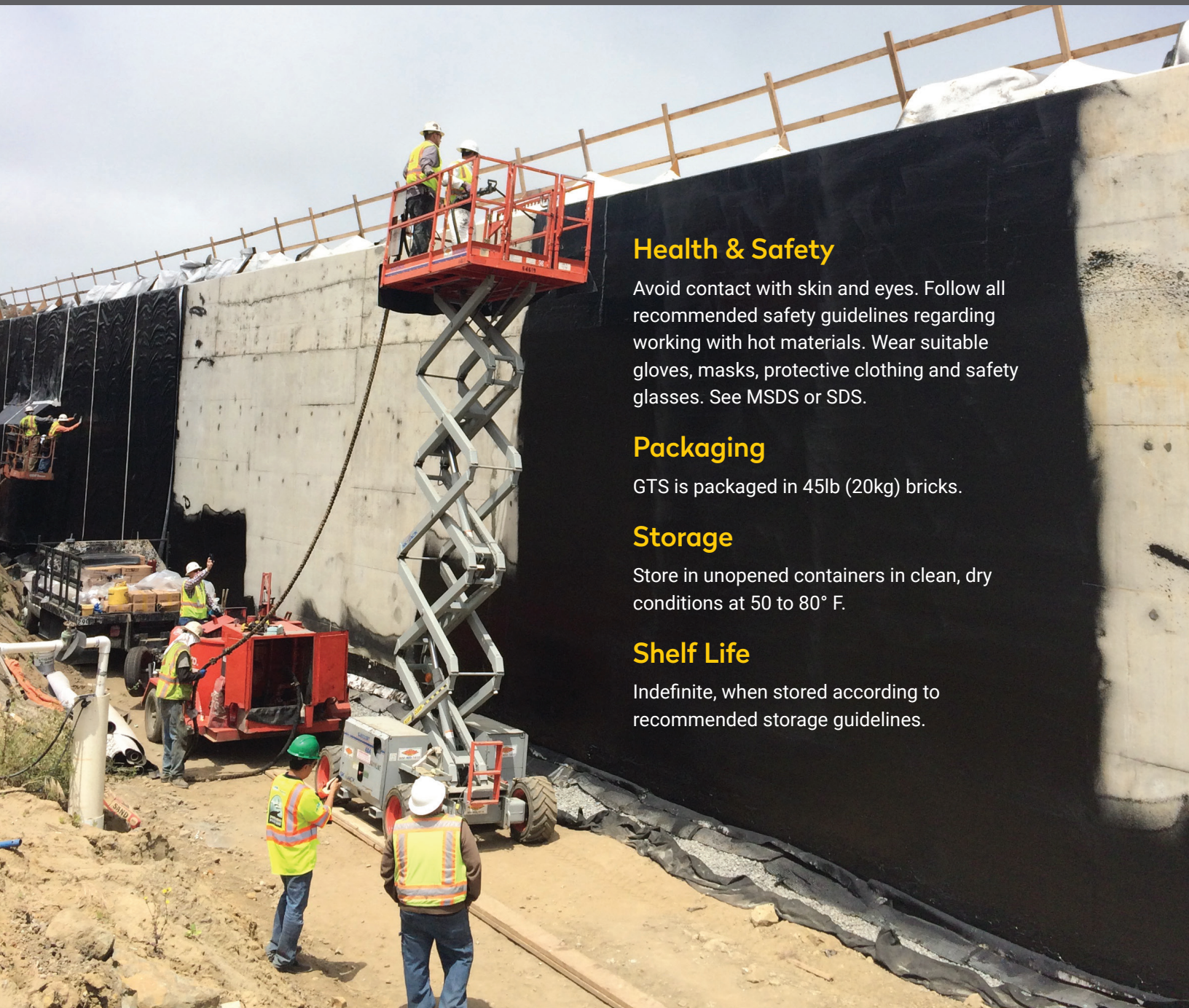
- Creates waterproof membrane stopping leaks at the source
- Remains a flexible gel, withstanding movement and vibration
- Resistant to freeze/thaw, wet/dry cycles

PHYSICAL PROPERTIES • GTI-1000 Injectable Polymer Gel	
Solids Content	75% (ASTM D 1353)
Flash Point	No observable flash point (ASTM D 56)
Viscosity	150,000 cP*, 2,600,000 cP** (ASTM D2196)
pH	7.5-8.0
Chemical Resistance to Sulfuric Acid	0.02g <1% weight (KS F 4935)
Chemical Resistance to Hydrochloric Acid	0.04g <1% weight (KS F 4935)
Chemical Resistance to Nitric Acid	0.03g <1% weight (KS F 4935)
Chemical Resistance to Sodium Chloride	0.04g <1% weight (KS F 4935)
Chemical Resistance to Alkali	0.03g <1% weight (KS F 4935)
Adhesion to damp surfaces	Rating of 1, no permeability (KS F 4935)
Structural Movement	No Permeability (KS F 4935)



Results shown are not intended as performance criteria for on-site installed material.

*Pump/Application Mixed Condition **Static Applied Condition



Health & Safety

Avoid contact with skin and eyes. Follow all recommended safety guidelines regarding working with hot materials. Wear suitable gloves, masks, protective clothing and safety glasses. See MSDS or SDS.

Packaging

GTS is packaged in 45lb (20kg) bricks.

Storage

Store in unopened containers in clean, dry conditions at 50 to 80° F.

Shelf Life

Indefinite, when stored according to recommended storage guidelines.



USA

8800 Roswell Road, Suite 145
Sandy Springs, GA 30350 USA
TF: 800-691-6601
T: 770-321-2500
T: 724-745-5030
info@strataworldwide.com

CANADA

Ontario
North Bay, Ontario Canada
Tel: (705) 978 2304

EUROPE

Ursulinenstr 35,
66111 Saarbrücken
Germany
T: +49 (0) 681 41095066
T: +49 (0)1 52 52075776
info@strataeurope.com